



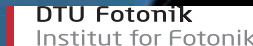
Lighting Up the Future of Smart Cities

Funded by the Government

The Danish Ministry of Energy, Utilities and Climate
The Capital Region of Denmark - Vækstforum hovedstaden
Region Zealand

Consortium Partners

Albertslund Municipality
Gate 21
DTU Photonics



Greater Copenhagen



42 Municipalities

5 Universities

+40 Companies & Utility providers



Digitalization a new Basic Conditions



Digitalization a new Basic Conditions



Short product life time
Disruptive vs. traditional development



Kilde: Egen tværing på baggrund af Downes & Nunes (2013)



Period of time to reach 50 millions users

	Phone	75 Years
	Radio	38 Years
	Television	13 Years
	Internet	4 Years
	iPod	3 Years
	Facebook	1 Years
	Twitter	9 Months
	Angry Birds	35 Days
	Pokémon Go	19 Days

Kilde: Egen tværing på baggrund af McKinsey & Company (2012)



1:1

DOLL Living Lab



More than 58%
of the Danish municipalities
have visited
DOLL Living Lab

Aabenraa - Aarhus - Albertslund - Allerød - Assens - Ballerup - Brøndby - Dragør - Egedal - Føxborg-Midtfyn - Favrskov - Fredensborg - Frederiksberg - Frederikssund - Furesø - Gentofte - Gladsøxe - Glostrup - Greve - Gribskov - Halsnæs - Helsingør - Herlev - Herning - Hillerød - Horsens - Hvidovre - Høje-Taastrup - Hørsholm - Ishøj - Kolundborg - København - Lejre - Middelfort - Norddjurs - Nordfyn - Næstved - Odense - Randers - Roskilde - Rudersdal - Rødovre - Silkeborg - Tårnby - Vallensbæk - Vardø - Viborg - Vordingborg - and many more...



100+

cities worldwide from

30+

**different countries have
visited DOLL Living Lab
(Danish cities not included)**

Media publicity from **80+** different media outlets

Lamppost shines a light on Smart Cities
Financial Times

How LED's are going to change the way we look at cities
Forbes.com

Smart Lighting in the Danish capital
BBC Radio

Mass 'Smart City' experiment lights up Copenhagen suburb
Reuters TV

Energy-efficient lighting system on installation in Denmark
CCTV

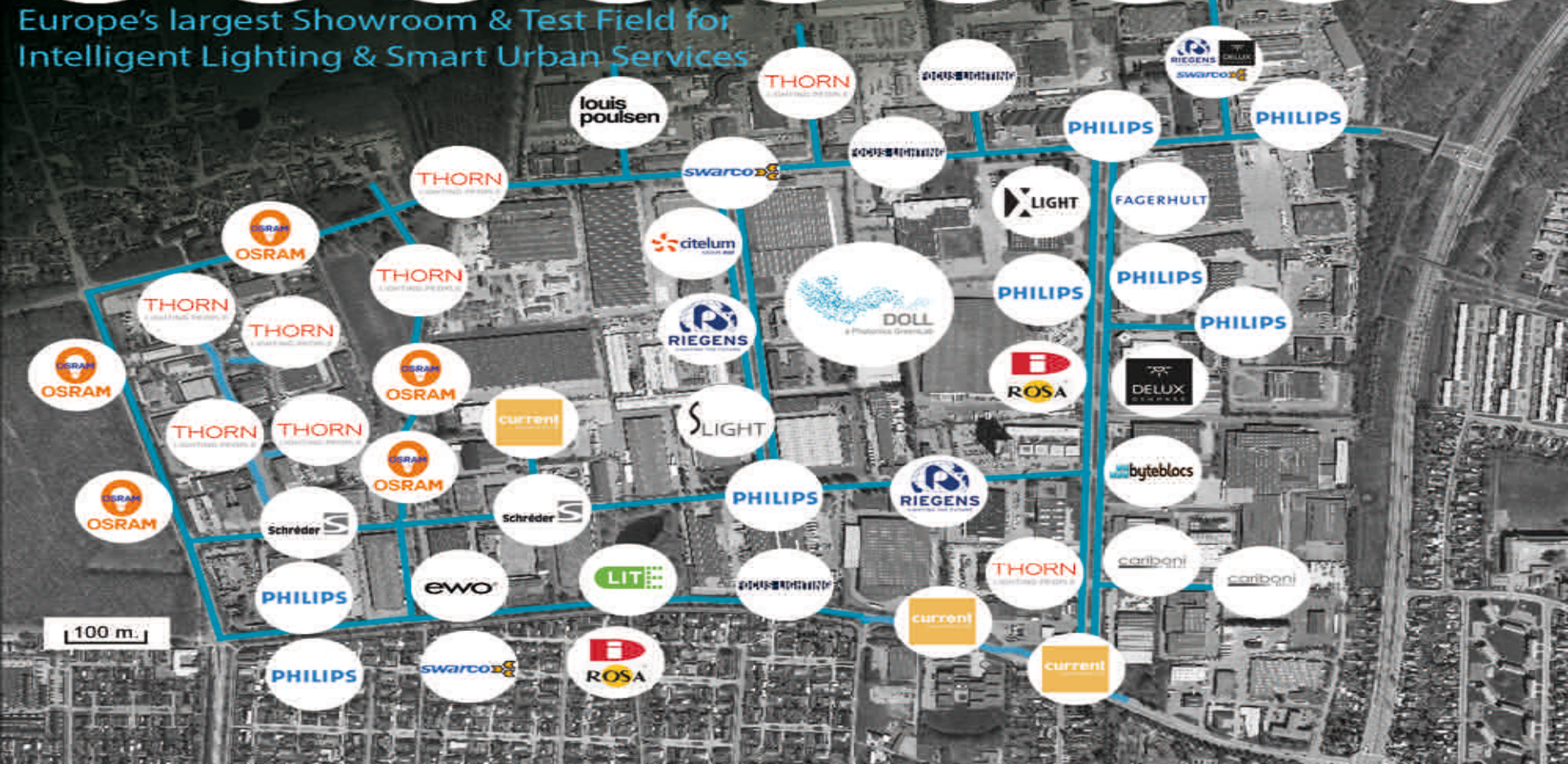
A small Danish suburb is a lab for the world's smartest streetlights
Gizmodo

Largest facility in Europe

- **Location:** A suburb to Copenhagen, industrial/commercial area, 10.000 employees
- **Area:** 1,5 km², 12 kilometres of road and bicycle lanes, our sandbox environment
- **Zones:** 49 zones with Lighting and smart city-technology
- **IoT-infrastructure:** 5 types of digital networks
- **Sensor network:** For waste, parking, air quality, noise, temp., etc.
- **Intelligent lighting network:** 435 connected light points, IP-address, real time control
- **Intelligent lighting solutions:** 80 different lighting lumieres
- **Management systems:** 20+ systems
- **Data platforms:** 1



Europe's largest Showroom & Test Field for Intelligent Lighting & Smart Urban Services



100 m.



50+ Partner Companies in DOLL Living Lab

50+ Gate 21 Partners

Delux Denmark

Riegens

Swarco Danmark

Focus Lighting

Thorn Lighting

X-Light

Fagerhult

Osram

Bytebloccs

Smart Bin

Leapcraft

Cisco

Sweco

Trinonic

Louis Poulsen

Philips Danmark

Alfred Priess

Citelum

Dong Energy

EnergiMidt

SEAS NVE

Zumtobel Group

Danintra

Rosa

NordSense

SoundEar

Seneco

Telensa

Technical University of Denmark

Global Light Standard

TDC

LITE

Amplex

Schreder

Force Technology

Ewø

Lightwell

LED-mark ITS

Schneider

Electric

IBM

NCC

Implement

Rambøll

HOFOR

Movia

Nobina

Vitani

Paradox

Big Belly

Joca

Sensity

TviLight

Wastecontrol

Exlumi

CommuniThings

Kuben Management

Next

Bloxhub

Ålborg University

Roskilde University

Capital Region

Region Zealand

42 municipalities

Intelligent Light System

DOLL
a Photonics GreenLab

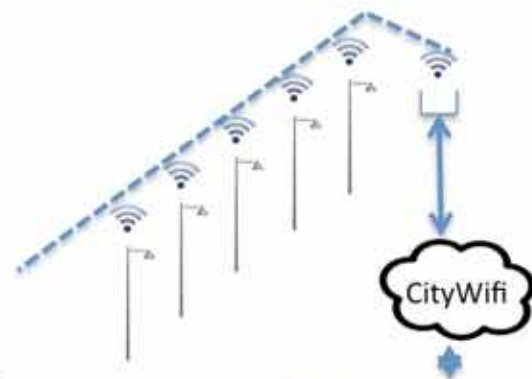
SENSING the WORLD...

NO_x and CO
Temperature
Pressure
Humidity
Ambient light
Rainfall
Wind
Particulate matter
Radiation
UVA/UVB

Real-time location systems (RTLS)
Ultrasound
IR
Power monitoring
Motion
Audio
Video
Accelerometer



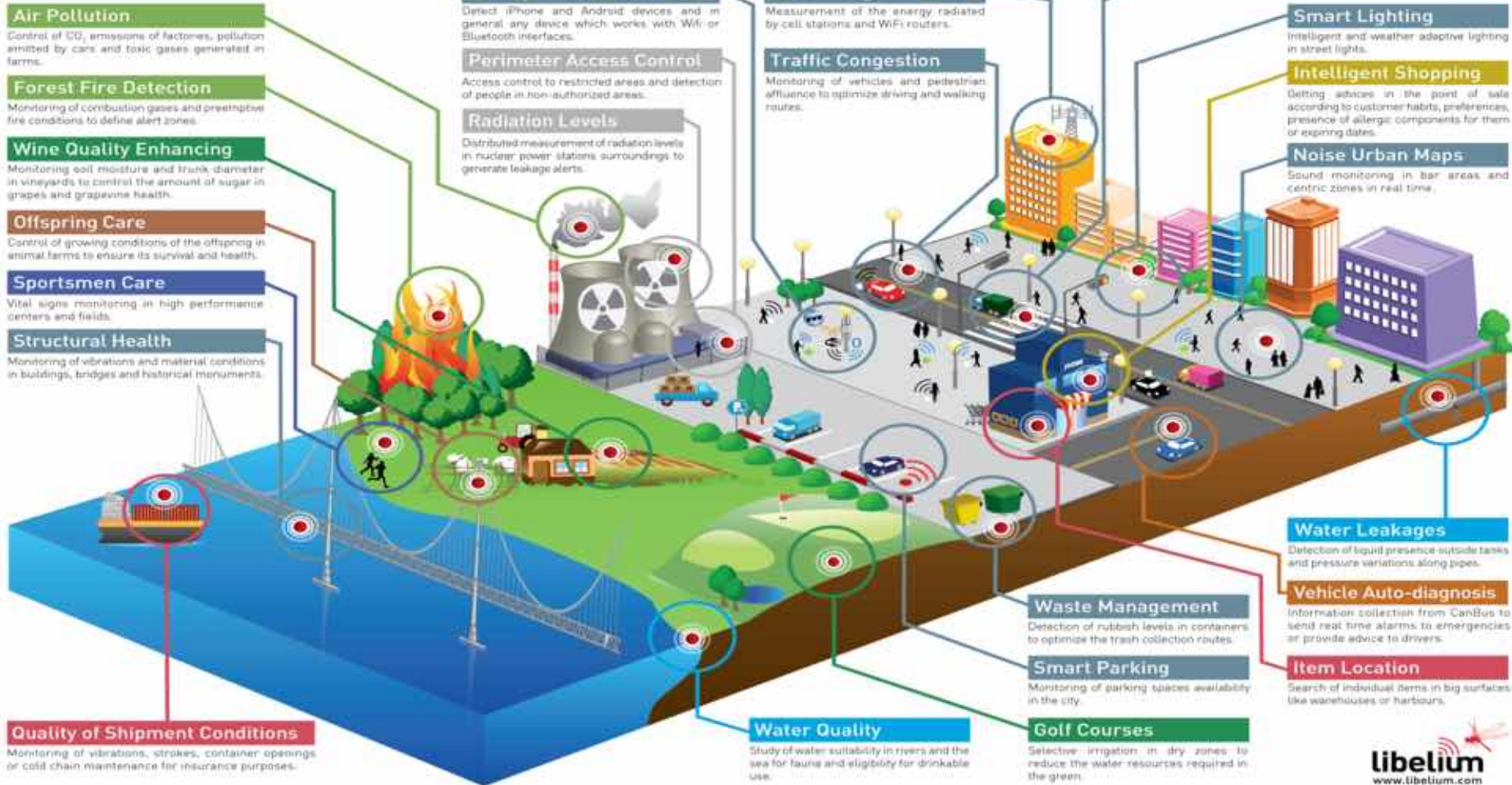
Smart Urban Services



Innovation Platform



Libelium Smart World



Potentials

1

New green solutions



- Street lighting
- Waste management
- Climate Adaptation
- Traffic Management
- Power Supply
- Circular Economy

2

Effective municipal operation



- Optimal utilization of the municipality's values (properties, cars, etc.)
- Optimal planning
- Platform for mobile workflow support

3

Improved service for citizens



- New ways of involving citizens
- Better services to citizens

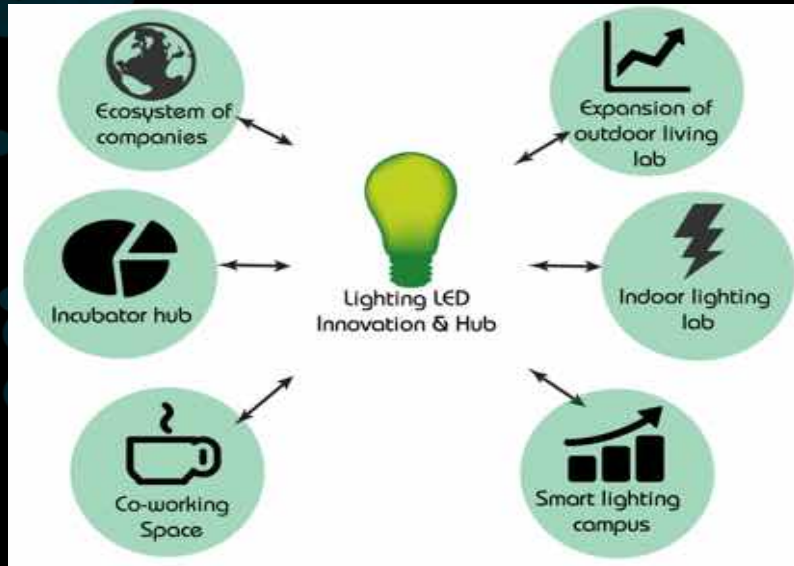
4

Growth through innovation



- Providing public open data can boost innovation

Innovation Platform Start Up Incubation





Thank you